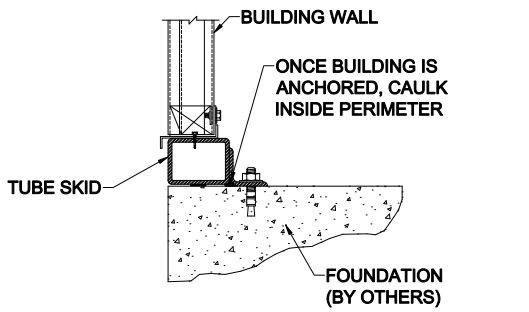
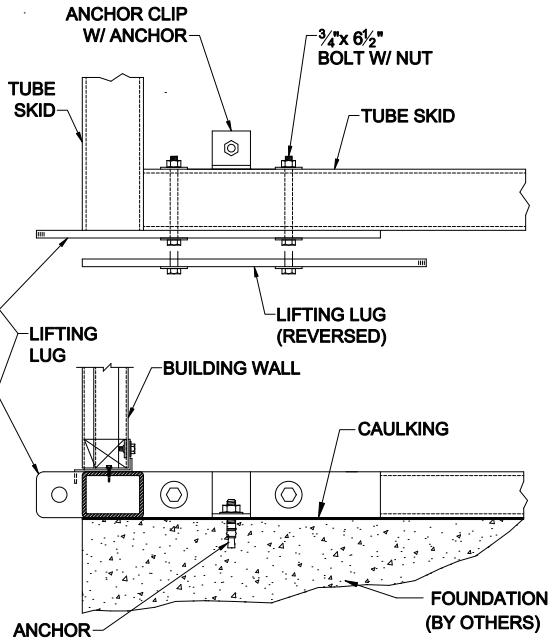


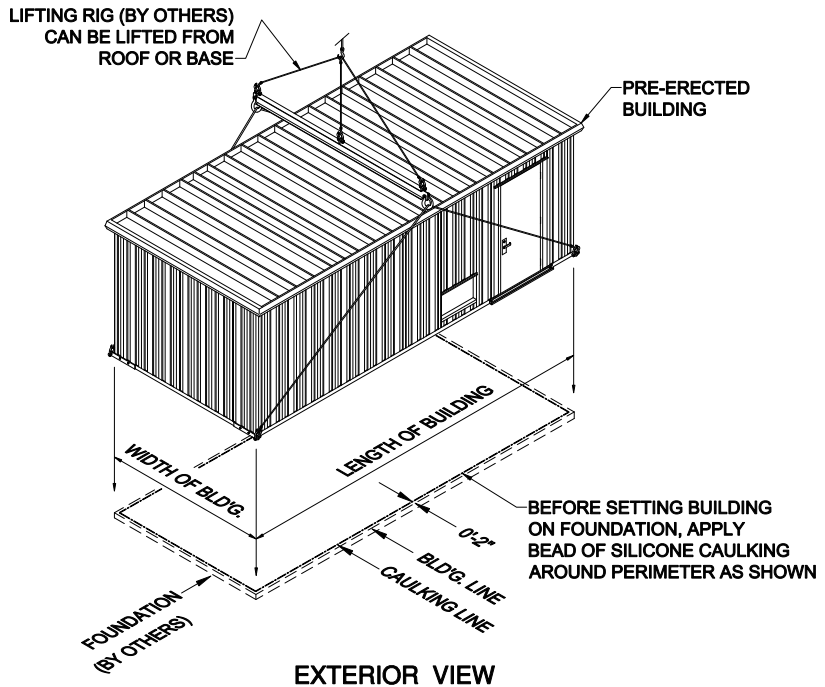
FACTORY ASSEMBLED BUILDING with tube skid



BASE DETAIL



LIFTING LUG DETAIL



EXTERIOR VIEW

Skid Design

Each building shall have a structural steel tube base frame. Removable lifting lugs to be provided at each corner. Doors can be recessed to finished floor. (Tube size to be determined by interior liner selected.)

Building Design

Factory assembled buildings consist of a self framing building, using the walls and roof as the structural system. Each building shall have a roof slope of 1 1/2" over width the building width. The roof system shall include gutter and rake trim for a finished appearance. Building to include accessories, electrical, HAVC and interior finishes as required by the customer. All assemblies will be completed in a controlled environment to insure a quality product.

PRODUCT NAME

FACTORY ASSEMBLED BUILDING

- Building to be mounted on a tube skid.
- Building to be lifted from base or roof.

MANUFACTURER

Parkline, Inc.
 P.O. Box 65
 Winfield, West Virginia 25213
 Phone: (304) 586-2113 in WV
 (800) 786-4855 outside WV
 (304) 586-3842 FAX
 web: <http://www.parkline.com>
 E-mail: parkline@parkline.com



13122 PRE-T